

KLEVV NEO N500 2.5" SSD – F/W UPDATE TOOL INSTRUCTIONS

Contents

Contents1

General Description2

System Requirement2

 Hardware Requirement 2

 Software Requirement 2

Instructions3

 Install Klevv Neo N500 2.5” SSD 3

 Start F/W Update 4

Cautions5

General Description

KLEVV SSD NEO N500 Solid State Drive (SSD) Firmware Update Tool will enable users to update firmware on SSD connected to the computer.

The SSD F/W Update Tool only support KLEVV SSD NEO N500 2.5", in order to improve its SSD performance, compatibility, or user environment.

To prevent any potential damage or data loss during the firmware update, please back up all data other storage devices before executing the SSD F/W Update Tool

System Requirement

Hardware Requirement

- A Computer with Windows system
- A Klevv Neo N500 2.5" SSD
- An available SATA port
- An available SATA power cable
- SATA cable

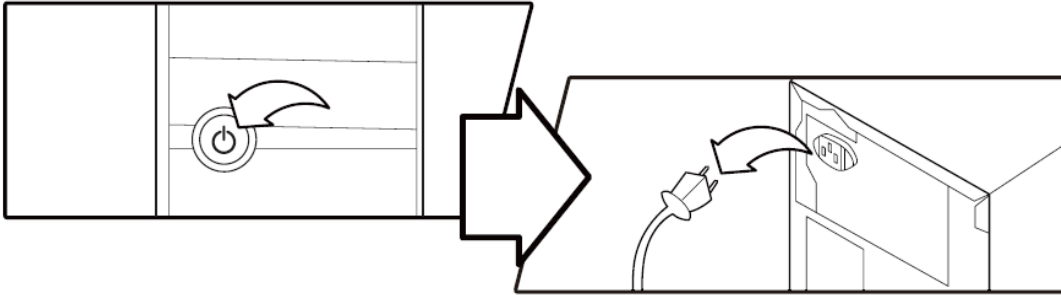
Software Requirement

- Windows 7, Windows 10 operating system

Instructions

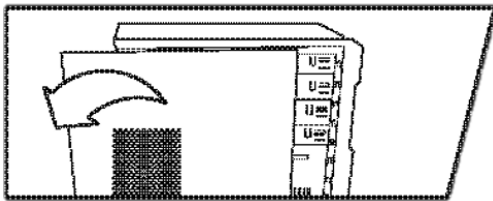
Install Klevv Neo N500 2.5" SSD

1. Power off your desktop and disconnect the power cord.

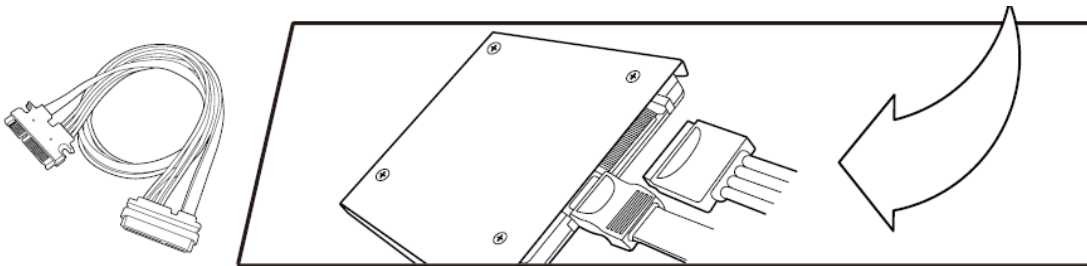


2. Open the cover of your computer.

* If needed please refer to the service manual for your desktop to open the cover safely.



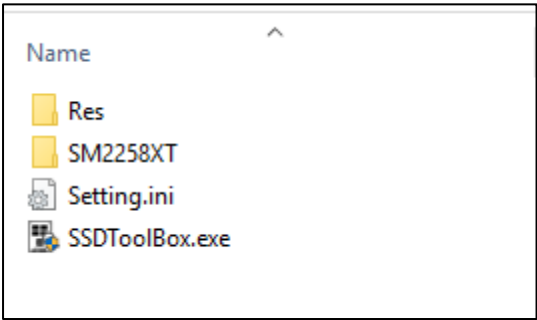
3. Connect the SATA and Power cable to your Klevv SSD



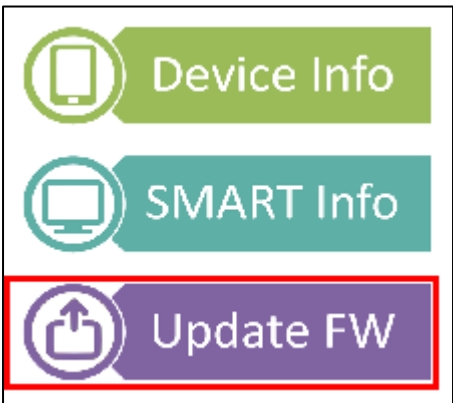
4. Reattach the covers to your desktop.
5. Power on your desktop to the Windows and check if Klevv SSD can be recognized.

Start F/W Update

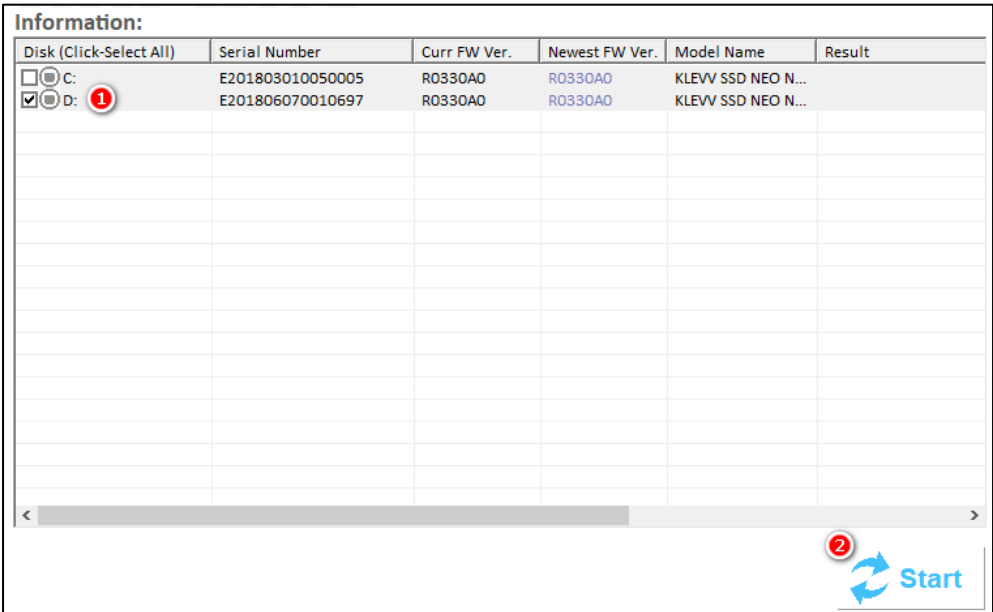
1. Download the SSD F/W Update tool from the following Klevv website
www.klevv.com
2. Unzip the file KLEVV_N500_SSDToolBox-Essencore to the desktop
3. Run the SSDToolBox



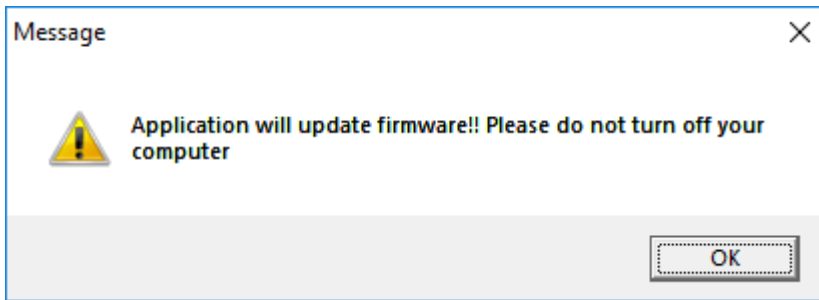
4. Click Update FW to the FW update page.



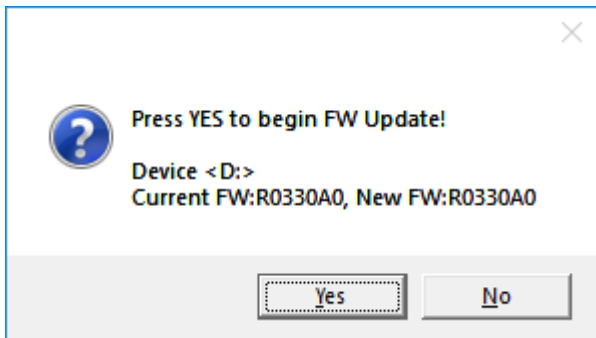
5. Select KLEVV Neo N500 2.5" SSD and click Start



6. Click OK



7. Click Yes to start F/W update



8. The Tool shows PASS

Information:

| Disk (Click-Select All) | Serial Number | Curr FW Ver. | Newest FW Ver. | Model Name | Result |
|--|------------------|--------------|----------------|--------------------|--------|
| <input type="checkbox"/> C: | E201803010050005 | R0330A0 | R0330A0 | KLEVV SSD NEO N... | |
| <input checked="" type="checkbox"/> D: | E201806070010697 | R0330A0 | R0330A0 | KLEVV SSD NEO N... | PASS |
| | | | | | |
| | | | | | |

9. Now your Klevv SSD is with the latest F/W version

Cautions

1. The SSD must be connected to the system with stable power during the firmware update process. SSD may be permanently damaged if the SSD device cable is disconnected or power is shut down.
2. Essencore does not take any liability for any kind of data loss and restoration that may occur during F/W update. Please make sure that you familiarize with F/W Update instructions before executing the F/W update.
3. The F/W update is not mandatory for those who don't encounter problems using the Klevv Neo N500 2.5" SSD product.